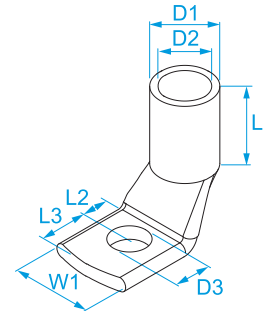


Product family: Terminals - DIN standard terminals
Code: 805379, 805439, 806499, 807499, 808499, 809499, 831499, 831619, 832619
Description: TERMINAL LUGS FOR COPPER CONDUCTORS · UNINSULATED · BENT 90° · FROM DIN 46235 TERMINAL LUGS

Image:

Technical Drawing:

Specifications:

TERMINAL MATERIAL: tinned copper
OPERATING TEMPERATURE: from -50 °C to +150 °C
DIMENSIONS: dimensions before bending are compliant to DIN 46235 standard

Code	Section (mm ²)	Section (AWG/MCM)	For screw Ø screw (mm)	For screw Stud size	Indent	W1 (mm)	L1 (mm)	L2 (mm)	L3 (mm)	D1 (mm)	D2 (mm)	D3 (mm)	
805379	16	(6)	8	5/16"	8	13	20	10	13	8,5	5,5	8,4	100/100
805439	16	(6)	10	3/8"	8	17	20	12	15	8,5	5,5	10,5	
806499	25	(4)	12	1/2"	10	19	20	13	16	10	7	13	100/100
807499	35	(2)	12	1/2"	12	21	20	13	16	12,5	8,5	13	100/100
808499	50	(1/0)	12	1/2"	14	24	28	13	16	14	10	13	50/50
809499	70	(2/0)	12	1/2"	16	24	28	13	16	16	12	13	50/50
831499	95	(3/0)	12	1/2"	18	28	35	13	16	19	13,8	13	25/25
831619	95	(3/0)	16	5/8"	18	32	35	16	19	19	13,8	17	
832619	120	(4/0)	16	5/8"	20	32	35	16	19	21	15,5	17	25/25