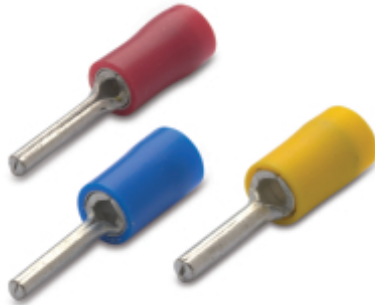
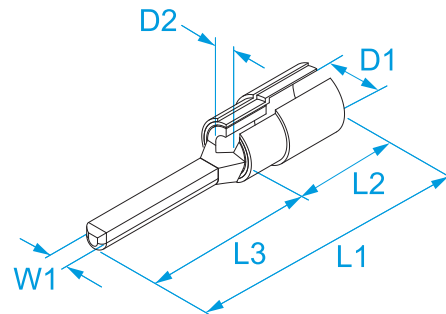







Product family: Terminals - Insulated terminal lugs from sheet
Code: 90150, 90151, 90250, 90251, 90350
Description: TERMINAL LUGS FOR COPPER CONDUCTORS · PVC INSULATED AND ANTI-VIBRATING FROM SHEET · ROUND PIN

Image:

Technical Drawing:

Specifications:

TERMINAL MATERIAL: tinned copper
END-SLEEVE MATERIAL: copper
INSULATION MATERIAL: polyvinylchloride (PVC)
INSULATION SELF-EXTINGUISHING GRADE: UL 94 V0
RATED VOLTAGE: 300 V max
OPERATING TEMPERATURE: 75 °C max
ASSEMBLING: double crimping

Code	Color	Section (mm ²)	Section (AWG/MCM)	W1 (mm)	L1 (mm)	L2 (mm)	L3 (mm)	D1 (mm)	D2 (mm)		
90150		Red	0.25 ÷ 1.5	(22 - 16)	1,9	22	10	12	4,4	1,7	100/1000
90151		Red	0.25 ÷ 1.5	(22 - 16)	1,9	19	10	9	4,4	1,7	
90250		Blue	1.5 ÷ 2.5	(16 - 14)	1,9	22	10	9	5	2,4	100/1000
90251		Blue	1.5 ÷ 2.5	(16 - 14)	1,9	19	10	9	5	2,4	
90350		Yellow	4 ÷ 6	(12 - 10)	2,7	28	14	14	6,7	3,6	50/500

V0
